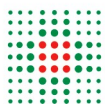


Centro Senologico
di Ferrara

PDTA



SERVIZIO SANITARIO REGIONALE
EMILIA-ROMAGNA
Azienda Ospedaliero - Universitaria di Ferrara
Azienda Unità Sanitaria Locale di Ferrara



Università
degli Studi
di Ferrara

BEYOND CARE

INFORMATION ON THE RIGHTS OF PEOPLE WITH BREAST CANCER



INDEX

Being aware of one's rights	pag.3
The assistance system/1	pag.4
The assistance system/2	pag.5
Severity of illness (Law 104/92)	pag.6
You may also be entitled to obtain/1	pag.7
You may also be entitled to obtain/2	pag.8
The work/1	pag.9
The work/2	pag.10
Exemption from co-payment	pag.11
Free prescription of aids and devices	pag.12
Free movement and parking card for the disabled/1	pag.13
Free movement and parking card for the disabled/2	pag.14
Issue of medical certificate for exemption from the use of safety belts while driving	pag.15
Health assistance abroad	pag.16
Most important regulations to which cancer patients can refer to/1	pag.17
Most important regulations to which cancer patients can refer to/2	pag.18
Useful numbers and addresses	pag.19
For further information	pag.20

BEING AWARE OF ONE'S RIGHTS

Dear Madam(s)

this booklet is dedicated to all persons suffering from a cancerous disease to make them aware of their rights and to guide them through the bureaucracy in the simplest way.

The aim is to provide concrete indications regarding the regulations in force, in order to enable them to make the most of the benefits provided in the social healthcare and economic benefits.

We hope that using the information in this booklet will help to obtain recognition of one's rights, avoiding possible difficulties and streamlining administrative paths.

The PDTA Manager
prof. Antonio Frassoldati

THE ASSISTANCE SYSTEM / 1

Cancer patients may be entitled to:

- 1. recognition of Civil Disability;**
- 2. economic accompaniment allowance.**

1. Recognition of Civil Disability

The State assists cancer patients who can apply for recognition of civil invalidity regardless of any insurance or contribution requirements.

The degree of invalidity is defined by the medico-legal commission with percentages referred to ministerial assessment tables.

How to apply? The application for recognition of civil invalidity must be submitted directly to INPS by telematics means.

UNIFIED INPS TELEMATIC PROCEDURE

As of 1 January 2010, the application for the assessment of disability and disability must be submitted directly to the INPS via telematics (online).

To access the INPS telematics services, first you have to go to your GP doctor, who sends INPS a certificate telematically declaring the citizen's health conditions of. The same certificate will be printed by the doctor and given to the applicant, with the number to be indicated on the application.

The citizen must then forward the application to INPS:

- either personally, through the telematic procedure accessed via the INPS website (www.inps.it), after requesting a personal PIN;
- or through CAFs (Centri di Assistenza Fiscale - tax assistance centres) which already have a PIN code, which is indispensable for submitting the application.

THE ASSISTANCE SYSTEM/ 2

The citizen is then invited by registered letter to appear for the assessment, with a valid identification document and the clinical documentation in his or her possession, proving the illness.

The citizen may also be accompanied and assisted by a medical doctor at his or her own expense. At the end of the assessment the file is completed by the Verification Commission at INPS, which concludes the process and sends the report by post directly to the person concerned.



YOU NEED TO KNOW THAT...

In the event of an aggravation of health conditions, a new request may be made for a new health assessment following the same procedure as the civil invalidity assessment, in order to obtain an evaluation of invalidity higher than that already recognized.

SEVERITY OF ILLNESS: L. 104/92

Along with the recognition of civil invalidity, it is possible to apply for the benefits provided by the disability law (law 104/1992 and subsequent amendments), which provides, for example, for three days of leave per month for the sick person and/or a family member (it is possible to request a single medical-legal examination to ascertain the requirements of the two laws).

In the event that health conditions prevent you from making the visit, you can request a home visit, either at the same time as submitting the application, or later through the general practitioner who will send the patient's aggravation online to INPS the patient's aggravation.



Timing and procedure. The AUSL medico-legal commission communicates the date of the visit for oncological assessments within 15 days from the date of online transmission of the application to INPS.

Benefits. The recognition of the state of invalidity and handicap by the AUSL medico-legal Commission of the AUSL entitles the person to socioeconomic benefits, which depend on the degree of invalidity recognized, the pathology and the pathology and income.



For more detailed information we recommend contacting a Tax Assistance Centre (CAF), as each condition must be assessed individually.

YOU MAY ALSO BE ENTITLED TO OBTAIN... / 1

After obtaining **recognition of Civil Disability**, those entitled to it may also obtain:

1. the Civil Invalidity Pension, which is granted by INPS:

- Italian citizen resident in Italy or foreign citizen holding a residence permit;
- in the presence of a recognized civil invalidity of 100%;
- between 18 and 65 years of age;
- in the case of a personal income that does not exceed the minimum ceiling fixed periodically set by the Financial Law.

2. the Monthly Allowance for Partial Civil Invalids, which is granted by INPS:

- to Italian citizens residing in Italy or foreign citizens holding a residence card of residence;
- aged between 18 and 65. For those over 65 it is replaced by the social allowance;
- if not working;
- with a personal income that does not exceed the minimum ceiling set periodically set by the Financial Law;
- with a civil invalidity between 74% and 99%.

Once you have obtained the allowance, you must annually submit to INPS a substitutive declaration, pursuant to Article 46 and subsequent modifications of the Unico of Presidential Decree no. 445 of 28/12/00, where it is declared to be working or not to be working.



YOU MAY ALSO BE ENTITLED TO OBTAIN... / 2

The Ordinary Disability Allowance, which is granted by INPS is a economic benefit in favour of persons whose working capacity is reduced to less than one third due to physical or mental infirmity.

Entitled to disability allowance are workers:

- employees;
- self-employed (artisans, shopkeepers, farmers ...);
- enrolled in certain pension funds replacing and supplementing the compulsory general insurance general compulsory insurance.

The requirements for obtaining the allowance are:

- reduction of working capacity to less than one third due to infirmity or physical or mental defect;
- at least 260 weekly contributions (i.e. 5 years of contributions and insurance) of which 156 days, (3 years of contributions and insurance) in the five years prior to the date of application.

Termination of employment is not required to obtain it.

2. Economic accompaniment allowance

Depending on the civil invalidity percentage, the following may also be granted accompaniment allowance may also be granted.

It is paid if the competent medical commission has verified:

- total inability due to physical or psychic impairment;
- the inability to walk without the permanent help of an the inability to walk without the permanent help of an accompanying person, or the inability to perform the daily acts of life and the consequent need for continuous assistance.

*Centro Senologico
di Ferrara*



THE WORK / 1

To simplify access routes for employees, it is advisable to also submit an application for recognition of serious pathologies, which only concerns employees undergoing partially and/or temporarily invalidating therapies, or life-saving therapies.

If certification is provided for in the National Collective Agreements, the periods of absence for therapies (certified by the competent USL) are not considered as sick leave.

Where to go? Assessments are carried out, for the whole Province in Ferrara, at the Forensic Medicine Operative Unit, Via A. Cassoli 30/32.

How can I access it? To book an assessment call 0532.235762 Monday to Friday from 8.30 a.m. to 10.00 a.m.

1. Targeted employment placement

The purpose of Law No. 68/1999 is to promote the insertion and labour integration of disabled people in the world of work through support services and targeted employment.

Who is entitled to it?

- persons of working age suffering from physical, psychic or sensory impairments and the intellectually disabled, resulting in a reduction working capacity of more than 45% (ascertained by the Commission for the recognition of civil invalidity);

- persons disabled for work with a degree of disability of more than 33%, ascertained by the National Institute for Insurance against Accidents at Work and occupational diseases (INAIL);

- blind or deaf-mute persons.



THE WORK / 2

2. Leave for employees

Law 104/1992 establishes the right of the worker, sick worker to enjoy work leave to attend necessary treatment, granting the same right to a family member assisting him/her.

In particular, the benefits for women suffering from breast cancer are:

- a reduction in working hours (2 hours) or, optionally, a leave of 3 days per month;
- the right to choose, where possible, the place of work closest to one's domicile, and the prohibition for the employer to transfer to another location without his consent;
- the right for the worker, in the event of a recognised disability greater than 50%, to take 30 days per year, even if not continuous, of paid leave for medical treatment related to the state of invalidity;
- the right to change their employment contract from full-time to part-time, at least until such time as health conditions permit a normal return to work;
- the right to perform duties compatible with one's state of health;
- in some cases (recognised disability of over 74%) to be able to apply for early retirement;
- the extension of the comportment period, i.e. the period of time during which the worker is entitled to keep his or her job (in case of suspension due to illness or accident). During this time, the worker suffering from cancer will be able to enjoy pay, according to provisions of the law and collective agreements, as well as the rights guaranteed to workers on sick leave.

In the case of part-time work, leave is reduced in proportion to the work performed. Leave not used in the month in question cannot be in the following months.



EXEMPTION FROM CO-PAYMENT

Cancer patients are entitled to exemption from paying co-payment for medicines, visits and examinations appropriate for the treatment of the cancer they suffer from and possible complications, for rehabilitation and for the prevention of aggravations.

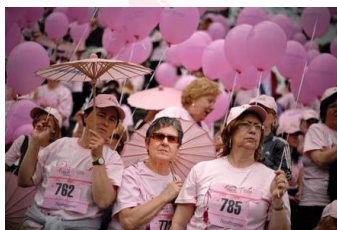
In order to be entitled to the exemption, **the certification** must be issued by the oncologist or public facility surgeon.

Registration of the exemption takes place at any Sportello Unico (CUP) of the USL company to which you belong, by presenting the following documents:

- health card;
- certification with the disease exemption code.

The operator checks the documentation and issues a health card with the exemption code - **code 048** - which identifies the exemption by pathology. The exemption may expire or be unlimited, depending on the medical certification.

Benefits: upon presentation of the pathology exemption card to the doctor who makes the prescription, you are entitled to free treatment at public or affiliated facilities, free medical, health and pharmacological treatment related to the pathology.



FREE PRESCRIPTION OF AIDS AND DEVICES

Prosthetic Assistance is a service guaranteed by the National Health Service (SSN) to help citizens who have lost their full autonomy by providing free of charge auxiliary aids, orthoses and prostheses, provided they are on the ministerial list of services that can be provided. (Ministerial Decree no. 503/92 et seq. Ministerial Decree No. 332/99 , Ministerial Decree No. 321/2001 and DPCM of 12/1/2017).

What are aids and aids? They are healthcare products, custom-made or mass-produced made in series, which help to restore one's autonomy and self-esteem.

Who is entitled? People with a disability of more than 33% (beneficiaries under Health Minister's Decree No. 332/1999), which include mastectomy women also awaiting recognition of disability. The prescription is always made by a specialist doctor in a public facility.

How to make the request? The request for aid or assistance must be submitted to a Sportello Unico - CUP for authorization, together with a copy of the recognition of disability or a copy of the application for recognition of disability. Some aids, if they have limited use in time (e.g: wig, elastic stockings, girdle, etc.) are not provided directly by the Health Service, but may be purchased by the person concerned, deducting the expenditure incurred in the tax return.

*Centro Senologico
di Ferrara*



FREE MOVEMENT AND PARKING CARD FOR THE DISABLED / 1

What is it? It is a coupon with the graphic symbol of disability that makes it possible for people with temporary or permanent mobility problems the circulation and parking of vehicles at their service also in areas reserved and/or pedestrian areas.

The coupon can only be used by the holder regardless of the vehicle carrying it: improper use results in a fine and the payment of a fine and the withdrawal of the same.



It is issued by the C.U.D.E. (Unified European Disabled Card - Contrassegno Unificato Disabili) of the municipality of residence, regardless of driving licence or vehicle ownership, and is valid and usable throughout Europe.

The sticker has a maximum duration of five years, even if the disability is permanent.

Application for the issue of a parking card. To apply for a parking card you must submit an application addressed to the mayor of your municipality of residence and hand it in at the C.U.D.E. (Contrassegno Unificato Disabili) counter residence and hand it in at the C.U.D.E. (Contrassegno Unificato Disabili European card).



FREE MOVEMENT AND PARKING CARD FOR THE DISABLED / 2

The application must be accompanied by:

- INPS certificate - Higher Medical Commission, permanently disabled with exemption from future revision visits, with 100% disability and accompaniment.

Or

- Certificate of First Instance Commission with 100% disability and accompaniment.

Or

- Certificate issued by the Azienda USL attesting to the significant reduction of walking ability. To obtain this certificate you must book an examination called 'invalid badge issue' at the (Counter) Sportello Unico (CUP), local pharmacies or by calling the toll-free number 800 532000 without a doctor's referral.

At the time of the examination you must present:

- all medical documentation, from which the specialist carrying out the verification can deduce the reduced mobility;

- 2 passport-size photos in colour, recent and printed on photographic paper;

- identity document.



ISSUE OF MEDICAL CERTIFICATE FOR EXEMPTION FROM THE USE OF SAFETY BELTS WHILE DRIVING

The certificate is issued in cases where there is a specific contraindication to the use of seat belts (particular pathology, impairment, pregnancy). The exemption is applied for the person driving the vehicle or also for the passenger.

How do I get access?

To book the assessment, you must go to the Contact Point (CUP).

At the time of the examination you must present:

- valid identity document;
- documentation proving the existence of clinical problems;
- receipt of payment of the service-ticket.



HEALTH ASSISTANCE ABROAD

It is only permitted for highly specialized services that are not obtainable in our country in a timely manner or in a form appropriate to the particularity of the clinical case.

Hospitalization abroad in highly specialized centers must be authorized **before leaving**, whether it takes place in facilities in countries European Union and the European Economic Area, or in countries with bilateral agreements and conventions with Italy, or in countries with no agreements.

The authorization is issued after a technical assessment, on a case-by-case basis, by the Regional Reference Centre of Emilia-Romagna competent for the specific pathology.

Eligible persons

- Italian citizens and their dependants (regardless of citizenship);
- European Union citizens residing in Italy and their dependants (regardless of citizenship) family members (regardless of citizenship);
- third-country nationals and legally resident dependent family members.

For information: Foreign Assistance Office, Health Centre "Cittadella San Rocco" (ex S. Anna), Corso Giovecca, 203 (sector 4), Ferrara. E-mail: ufficioestero@ausl.fe.it



MOST IMPORTANT REGULATIONS TO WHICH CANCER PATIENTS CAN REFER TO / 1

We point out the most important regulations to which cancer patients can refer to.

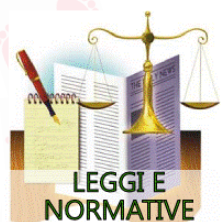
1. Law No. 118/1971 allows access to economic benefits and support that the State provides for citizens who, due to illness, congenital or acquired impairments, suffer partial or total reduction working capacity, or, if minors, the inability to perform tasks and functions proper to their age.

2. Framework Law No. 104/1992 and subsequent amendments, which lays down the principles in the field of rights, social integration and assistance to the disabled person, in order to guarantee full respect for the human dignity of people with disabilities.

3. Law No. 68/1999 provides for the possibility of employment in companies and public bodies on the basis of posts reserved for the disabled.

4. Law No 80/2006 "Urgent Measures on the Organization and functioning of the public administration", provides for an accelerated disability assessment for cancer patients.

5. Regional Council Resolution No. 1016 of 7/7/2008, Implementation of Art. 5 first paragraph of Regional Law 19/2/2008, no. 4 bearing "Discipline of assessments of disability. Further simplification measures and other provisions on health and social matters".



MOST IMPORTANT REGULATIONS TO WHICH CANCER PATIENTS CAN REFER TO / 2

MUST KNOW THAT...

The legislation on the protection of rights is constantly being updated and amended and it is very difficult to provide comprehensive and up-to-date guidance for each individual situation.

The benefits provided for civil invalids both at national and local level are numerous.

It is therefore advisable to refer the USL or your local social security organization, or to associations, patronages or trade unions, that deal with and social security at local level.



USEFUL NUMBERS AND ADDRESSES

Public Relations Offices (PRO)

- **Ferrara University Hospital Authority** - Tel. 0532.236425 - Fax 0532.236895.

E-mail: urp@ospfe.it

- **Local Health Unit of Ferrara** - Tel. 0532.235605 - Fax 0532.235602.

E-mail: urp@ausl.fe.it

<p>Casa della Salute Cittadella S. Rocco - Ferrara c.so Giovecca, 203 tel: 0532-235605 fax: 0532-235602 mail: urp@ausl.fe.it</p>	<p>Casa della Salute Terre e Fiumi - Copparo via Roma, 18 tel: 0532-879733 fax: 0532-235602 mail: urpcopparo@ausl.fe.it</p>	<p>Casa della Salute Portomaggiore Ostellato via De Amicis, 22 Portomaggiore tel: 0532-817429 fax: 0532-317717 mail: urpeppi@ausl.fe.it</p>
<p>Ospedale Mazzolani-Vandini Argenta via Nazionale Ponente, 7 tel: 0532-317856 fax: 0532-317717 mail: urpargenta@ausl.fe.it</p>	<p>Ospedale del Delta Lagosanto via Valle Oppio, 2 tel/fax: 0533-723224 mail: urpdelta@ausl.fe.it</p>	<p>Ospedale S.S. Annunziata Cento via Vicini, 2 tel: 051-6838429 fax: 051-6838230 mail: urpcento@ausl.fe.it</p>

Free telephone information service of the Region Emilia-Romagna connected with the URPs of the Aziende Sanitarie of Ferrara

Numero Verde

800-033-033

Voluntary associations



A.N.D.O.S. onlus

Associazione Nazionale Donne Operate al Seno

A.N.D.O.S. (National Association of Women Operated with Breast). Via Darsena, 53/A - Ferrara Tel. 0532.769334
andosferraracomitato@gmail.com

L.I.L.T. ONLUS (Italian League for the Fight against Tumors).

Cel. 340.9780408 (sede) e 339.8413284 (Presidente).

info@legatumoriferrara.it, lilt.ferrara@gmail.com



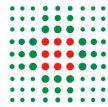
A.N.T. ONLUS (National Cancer Association). Via Cittadella, 37/39 - Ferrara - Cel. 348.5130145. delegazione.ferrara@ant.it

A.D.O. ONLUS (Oncological Home Care Association). Via Veneziani, 54 Ferrara. Tel. 0532.977672. segreteria@adohtf.it



"Woman's Heart" Association

Lagosanto- Ferrara. cuoredidonnaferrara@gmail.com



FOR FURTHER INFORMATION

Breast PDTA

TEL. 0532.237862 – 334.1365533

FAX 0532.239723

Mondays from 9.00 a.m. to 2.00 p.m;
Tuesdays to Fridays from 9 a.m. to 4 p.m.

E-mail: pdtamammella@ospfe.it

THE BROCHURE WAS PRODUCED THANKS TO THE COLLABORATION OF
- PUBLIC RELATIONS OFFICES OF THE USL COMPANY AND THE UNIVERSITY HOSPITAL COMPANY OF FERRARA;
- COMPLEX FORENSIC MEDICINE OPERATIONAL UNIT;
- PROSTHETIC ASSISTANCE OFFICE OF THE USL COMPANY.

REVIEWED ACCORDING TO THE PRINCIPLES OF HEALTH LITERACY
BY THE PRESS OFFICE (M. Malossi V. Tomasi) OF THE HOSPITAL COMPANY - UNIVERSITY OF FERRARA